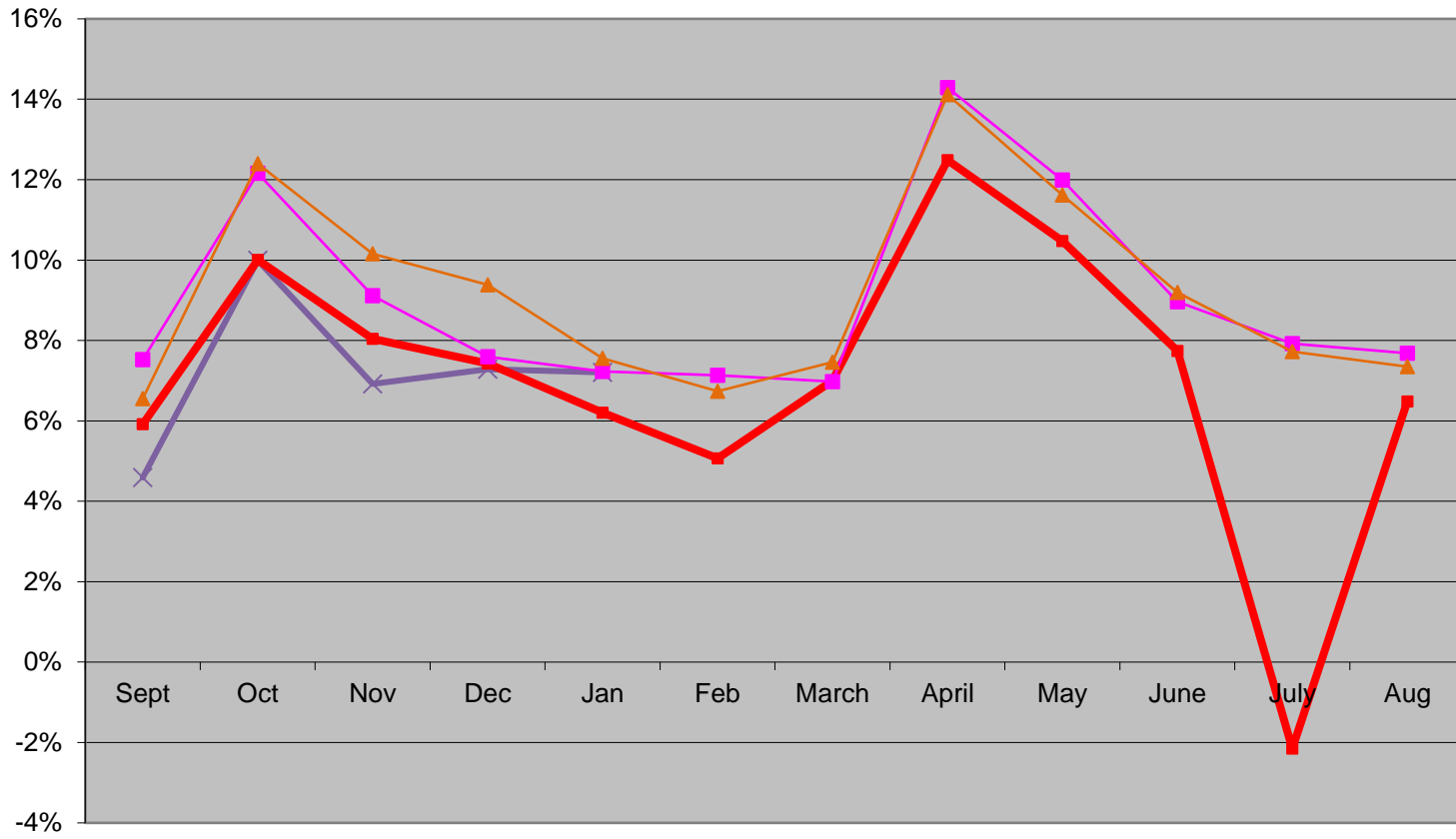


Sequim School District #323

General Fund Comparative As of January 31, 2017 and 2016

	2016-17 thru 01/31/2017			2015-16 thru 01/31/2016			% change 15/16 to 16/17
	Budget	Yr-To-Date	% Rec'd	Budget	Yr-To-Date	% Rec'd	
Revenues							
1000 Local Taxes	5,780,000	2,347,554	40.6%	5,780,000	2,352,995	40.7%	-0.2%
2000 Local Support Nontax	432,900	509,882	117.8%	414,600	282,564	68.2%	80.4%
3000 State, General Purpose	18,075,946	7,973,590	44.1%	16,949,196	7,208,342	42.5%	10.6%
4000 State, Special Purpose	4,378,367	1,722,584	39.3%	4,191,922	1,630,306	38.9%	5.7%
5000 Federal, General Purpose	120,000	-	0.0%	120,000	-	0.0%	#DIV/0!
6000 Federal, Special Purpose	2,506,693	665,487	26.5%	2,255,650	727,001	32.2%	-8.5%
7000 Revenues Fr Oth Sch Dist	-	-		-	-		
8000 Rev Fr Oth Agncy & Assoc	-	-		-	2,819		-100.0%
9000 Other Financing Sources	-	-		-	-		
Total Revenues	31,293,906	13,219,097	42.2%	29,711,368	12,204,028	41.1%	8.3%
Expenditures							
	Budget	Yr-To-Date	% Spent	Budget	Yr-To-Date	% Spent	
00 Regular Instruction	17,413,391	6,944,665	39.9%	16,344,329	6,821,846	41.7%	1.8%
20 Special Ed Instruction	3,919,204	1,721,769	43.9%	3,622,143	1,661,653	45.9%	3.6%
30 Voc Ed Instruction	1,403,055	549,483	39.2%	1,362,528	529,418	38.9%	3.8%
50&60 Compensatory Ed Instruct	1,943,234	646,552	33.3%	1,786,570	573,309	32.1%	12.8%
70 Other Instructional Pgms	139,553	43,912	31.5%	439,679	56,214	12.8%	-21.9%
80 Community Services	19,365	2,818	14.5%	19,365	18,080	93.4%	-84.4%
90 Support	6,638,942	2,932,710	44.2%	6,201,256	2,648,981	42.7%	10.7%
Total Expenditures	31,476,744	12,841,908	40.8%	29,775,870	12,309,501	41.3%	4.3%
Transfers to Debt Service Fd	-	37,456		376,800	38,570	10.2%	
Revenues Over (Under) Expend	(182,838)	339,732		(441,302)	(144,043)		-335.9%
Beginning Fund Balance	-	1,928,220		2,230,000	1,990,783		
Ending Fund Balance	(182,838)	2,267,952		1,788,698	1,846,741		22.8%
Fund Balance as % of Budgeted Expenditures	-0.58%	7.21%		6.01%	6.20%		

FUND BALANCE AS % OF TOTAL EXPENDITURES



—x— 2016-17 —■— 2015-16 —■— 2014-15 —▲— 2013-14

REVENUES OVER (UNDER) EXPENDITURES

